



QUILT

Wall Lights



QUILT is an evolving body of sculptural lights.

For this exploration, we embrace flexibility: layers of cotton and batting that bend and fold. Hand-stitching these materials feels deeply comforting, and when the lights turn on there is a sense of completeness – a quiet fullness warming the room.

Sewn with patterns that echo the Pantheon's coffered dome, the surfaces collapse a sacred geometry into the intimate and touchable. The completed pieces are lightweight and delicately wall-hung with simple brass pins or pegs.

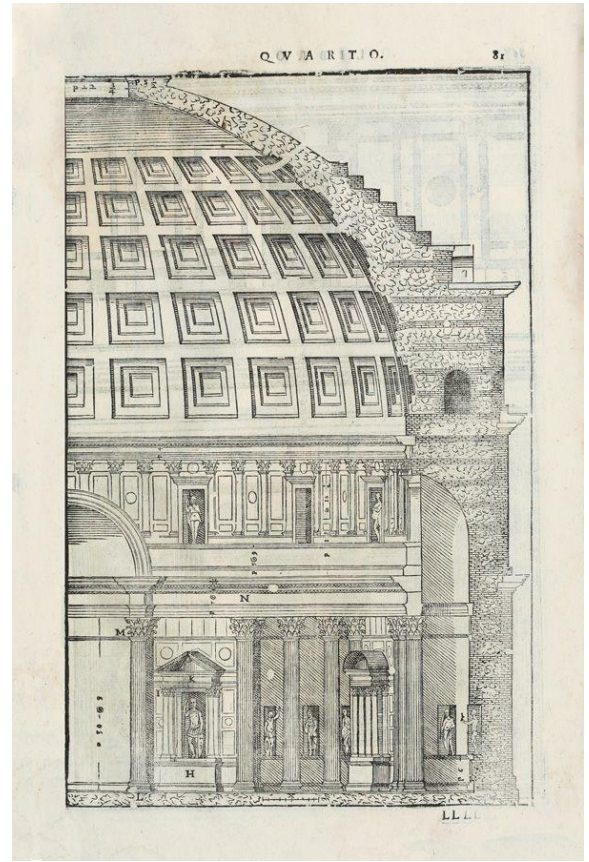
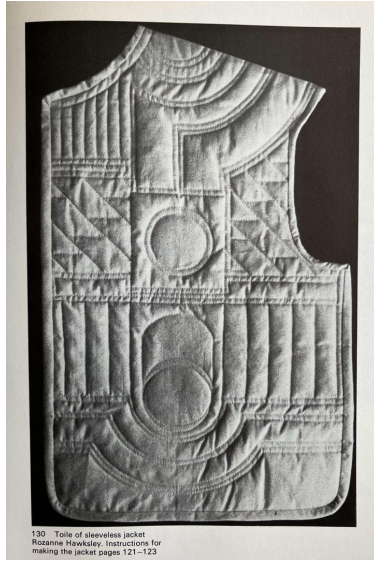
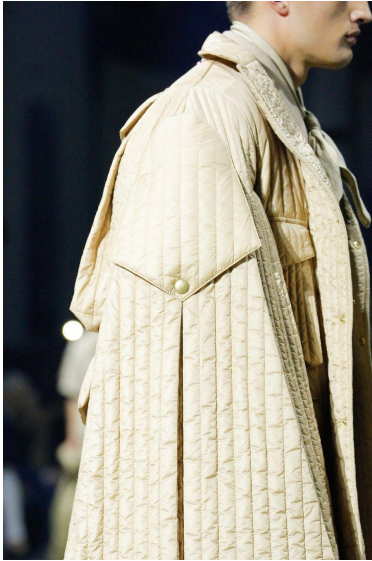
Handmade in San Francisco

Inspiration

-Moncler Gamme Bleu Spring 2017 Menswear Fashion Show
(far left)

-Palladio, Andrea, 1508-1580. "I Quattro Libri
dell'Architettura. In Venetia: Apresso Bartolomeo
Carampello, 1581.." (far right)

-Toile of sleeveless jacket, Rozanne Hawksley (center)





QUILT twill

21 × 19 × 3.5 in

53 × 48 × 9 cm

Cotton, batting, custom brass pins &
lighting components

\$3,300





QUILT pantheon

34 × 32 × 6 in

86 × 81 × 15 cm

Cotton, batting, custom
brass pins & lighting
components

\$4,000





QUILT sling

33 x 13 x 13 in

84 x 33 x 33 cm

Cotton, batting, custom
brass button, wooden peg &
lighting components

\$4,800





QUILT pendant

81 x 14 x 12 in
206 x 36 x 31 cm

Cotton, batting,
Mahogany wood, custom
brass hardware, &
lighting components

\$15,000

Available for
commissions





W H I T E D I R T

studio@whitedirtstudio.com

[@whitedirtstudio](https://www.instagram.com/whitedirtstudio)

whitedirtstudio.com

©2025 White Dirt studio