

HERMA

Sculptural Side Tables



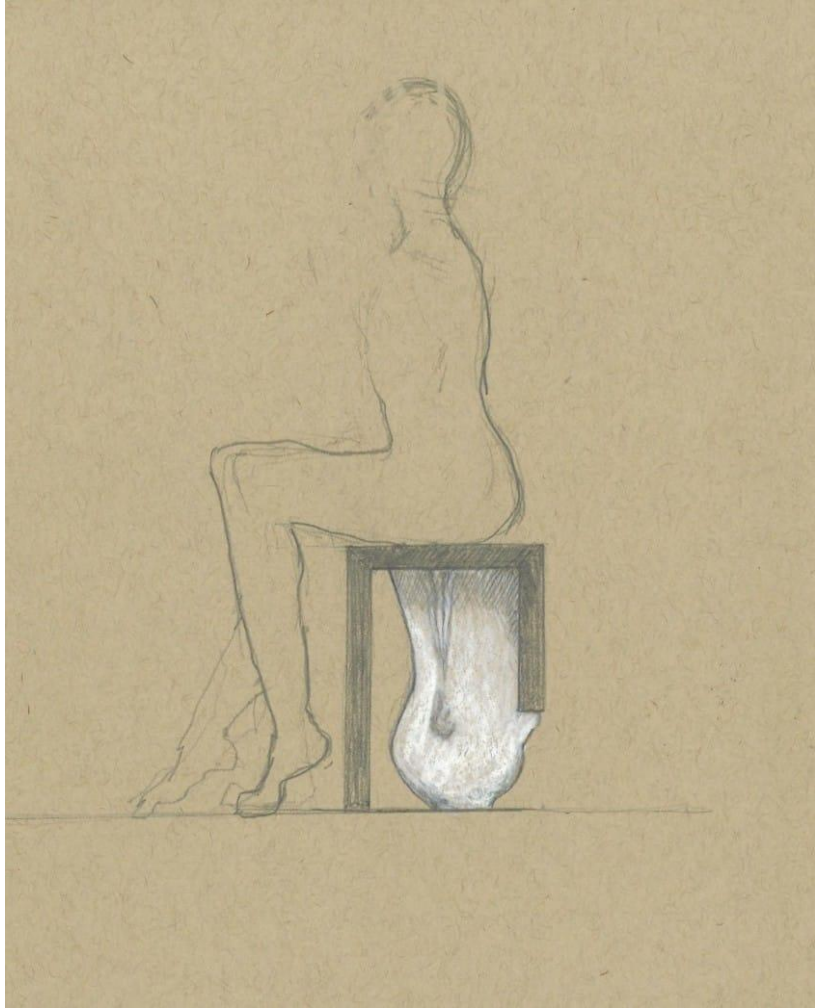
W H I T E D I R T

HERMA (n) - a sculpture or vertical support that is typically a square or rectangular pillar and features a carved head or bust.

Our sculptural furniture collection takes inspiration from classical forms to create a multi-functional piece.

Each is made Douglas fir wood and white gypsum cement.

Handmade in San Francisco.

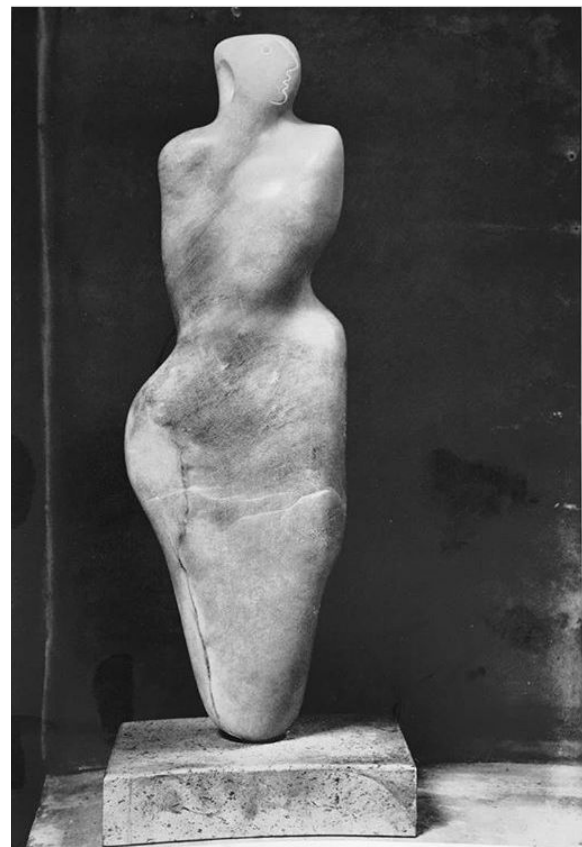




unique and unrepeatable the Greeks for future g
 en by individual inspira- yardstick against which
 cult we in
 of our very r
 some- nt for Maria
 t for come
 d, the moupe
 s, and perpe
 of the icon c
 today.
 of art
 nality
 g been
 tion.
 nature
 eatabil-
 "Serial
 format
 "), the

AUGUSTE RODIN, PALLAS WITH THE
 PARTHENON, 1896, MARBLE (HEAD) AND
 PLASTER (TEMPLE). PARIS, MUSÉE RODIN

WORD
 Despi
 rigid a
 "classi
 tic, ve
 the fru
 concep
 the hea
 Hailing
 milieu
 from th



Inspiration

- Pallas with the Pantheon by Rodin, from Dana's library (top left)
- Porch of Caryatids, Erechtheion, Acropolis, Athens, Greece (1949) by Isamu Noguchi (bottom left)
- Figure (1933) by Barbara Hepworth (far right)

HERMA I

dimensions

18 x 10 x 10 inches

\$4,100



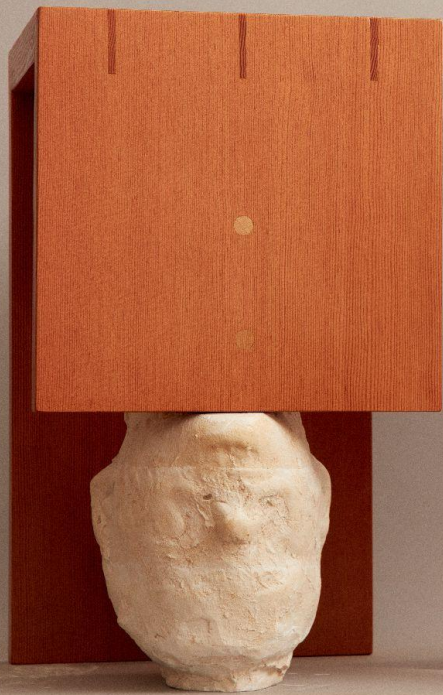
HERMA II

dimensions

18 x 10 x 10 inches

\$4,100







HERMA III

dimensions
18 x 10 x 10 inches

\$4,100





W H I T E DIRT



studio@whitedirtstudio.com

[@whitedirtstudio](https://www.instagram.com/whitedirtstudio)

whitedirtstudio.com

©2026 White Dirt